

# Getting Started with

Worbla is used in many ways, but here's a quick guide to getting started that can be used for both Worbla's Finest Art and Worbla's Black Art.

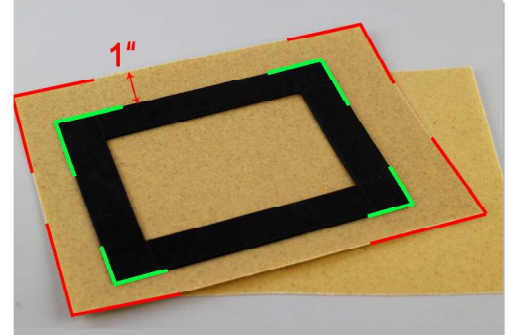
Remember that Worbla is hot when activated! Use Caution when applying heat.



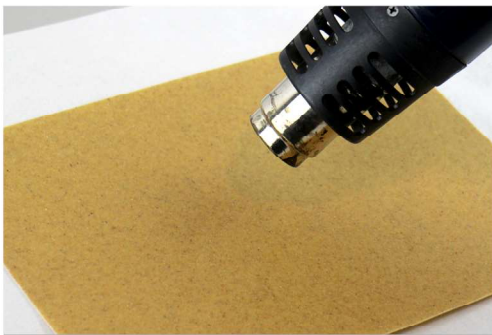
Made with Worbla  
(You can use Finest Art or Black Art like this)



Cut shape from craft foam  
(this gives your project body and stability)



Cut 2 pieces of Worbla  
1" larger than foam



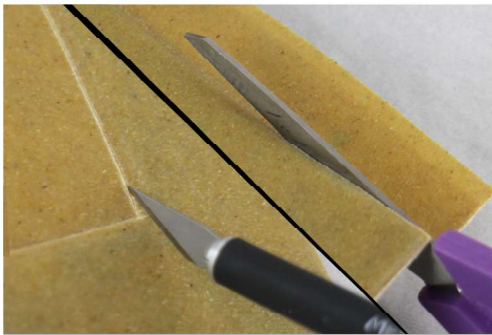
Heat Worbla until soft using  
a heat gun



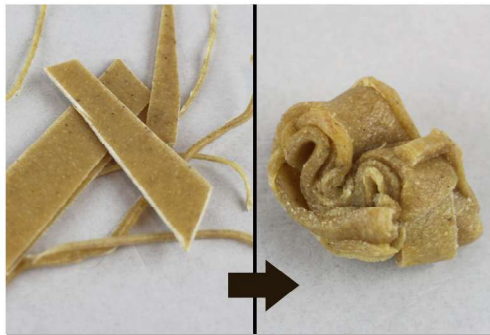
Sandwich EVA foam  
between hot Worbla sheets



Press edges firmly closed  
to create a seal



Trim excess with scissors  
or craft knife



Blend scraps together by heating  
and kneading



Shape details  
(we always sculpt details from our scraps)



If using sculpting tools  
use water to prevent sticking



Heat pieces to join  
(heat both sides for best adhesion)



Paint with acrylics  
(use a primer for a smoother finish)